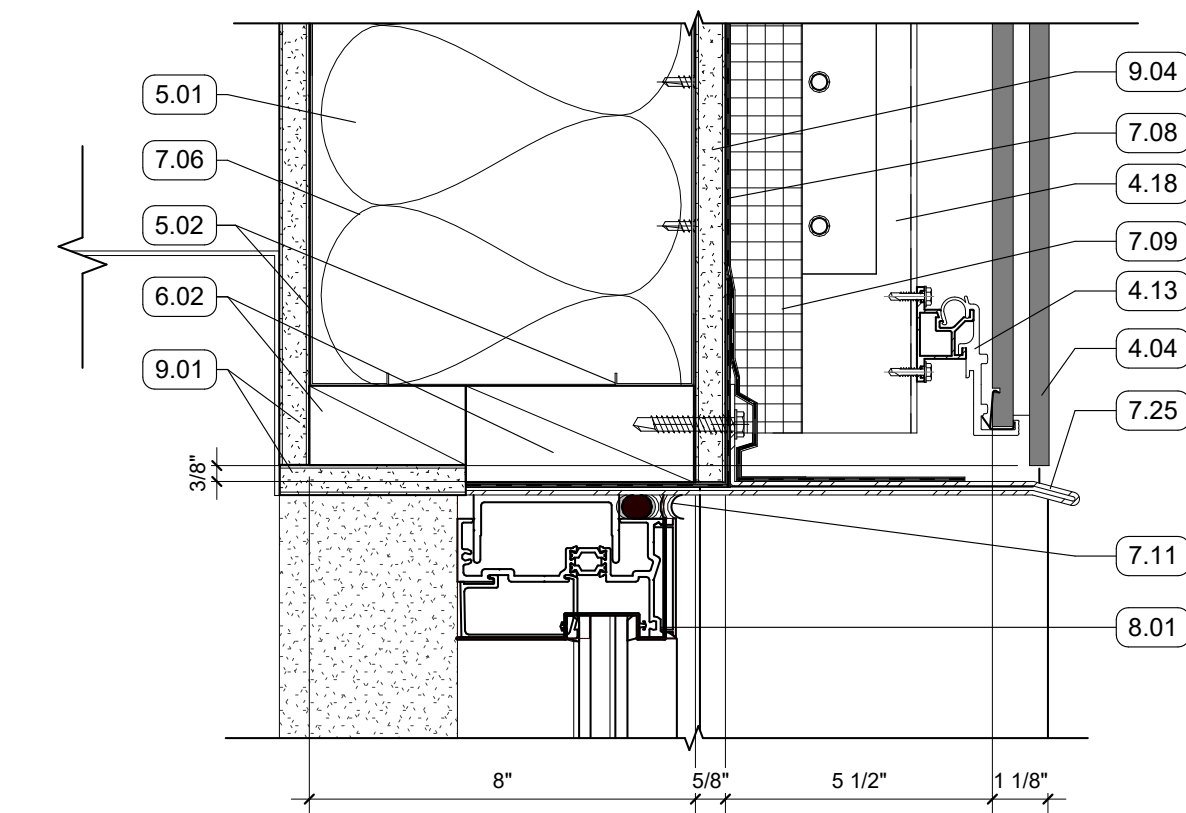
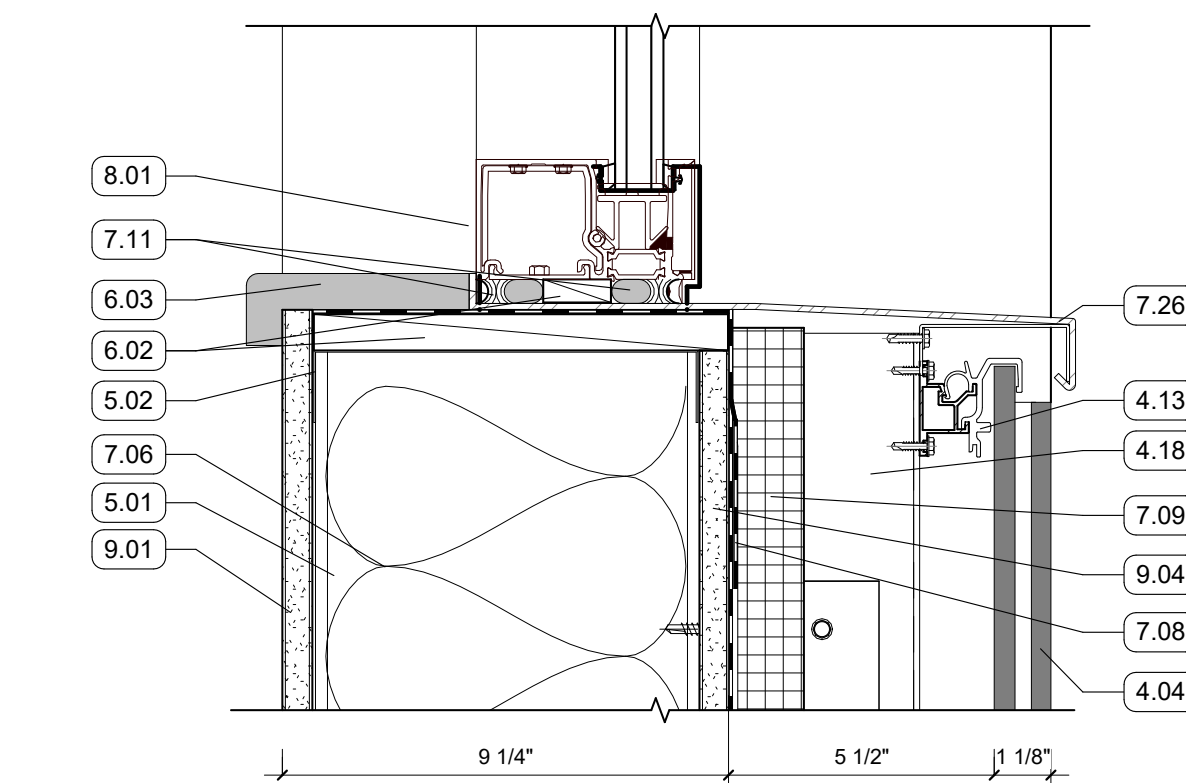


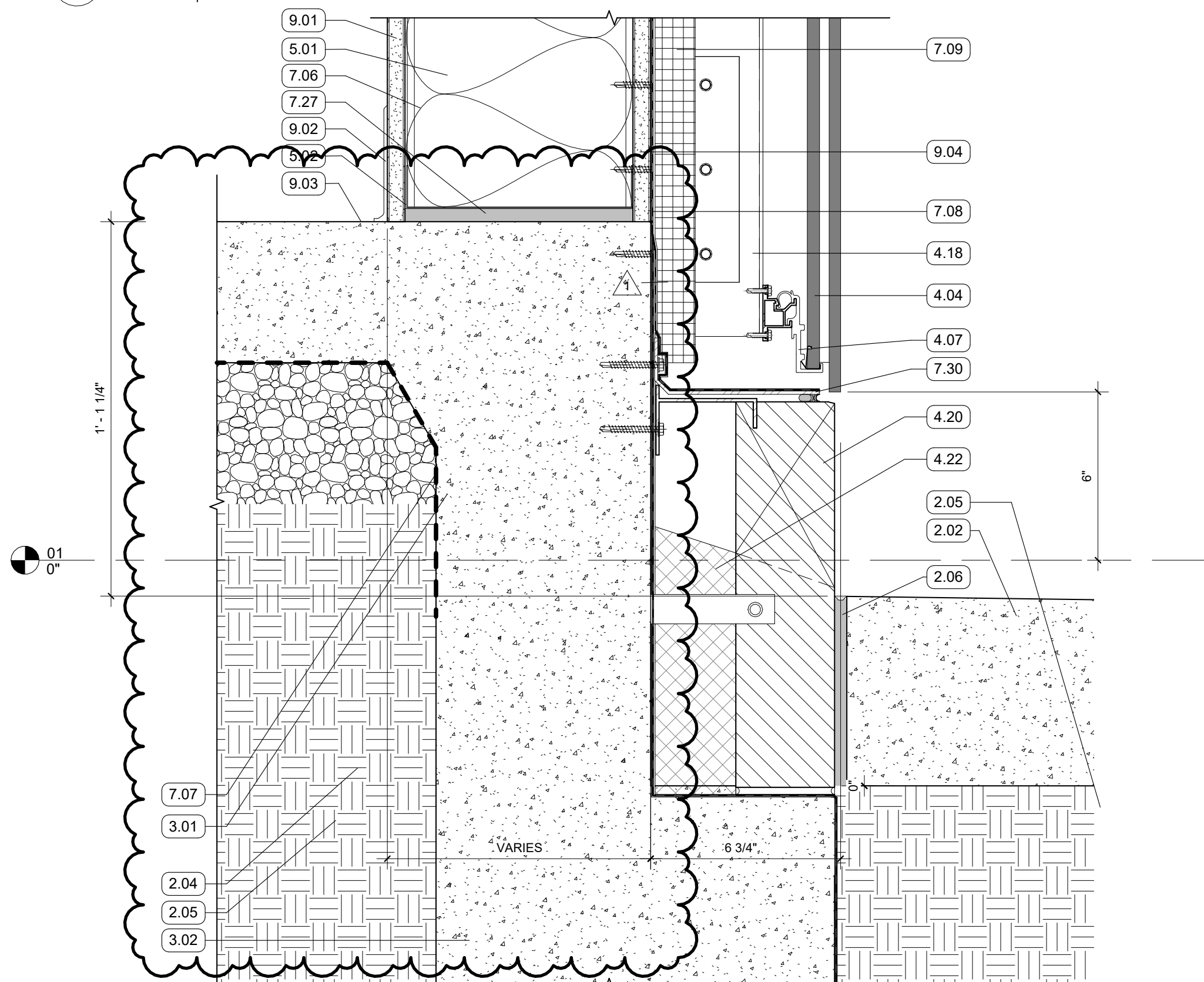
SECTION DETAIL - TERRA COTTA SOFFIT
3" = 1'-0" | RE:1/A350



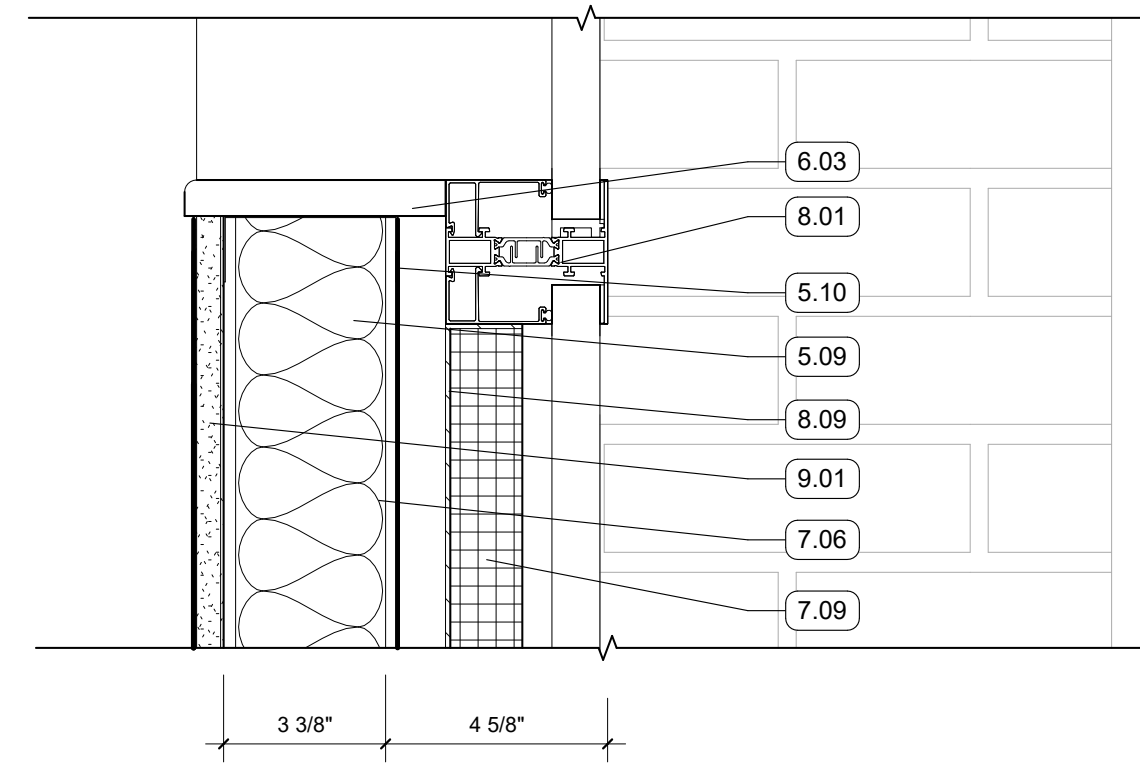
SECTION DETAIL - METAL HEADER
3" = 1'-0" | RE:1/A350



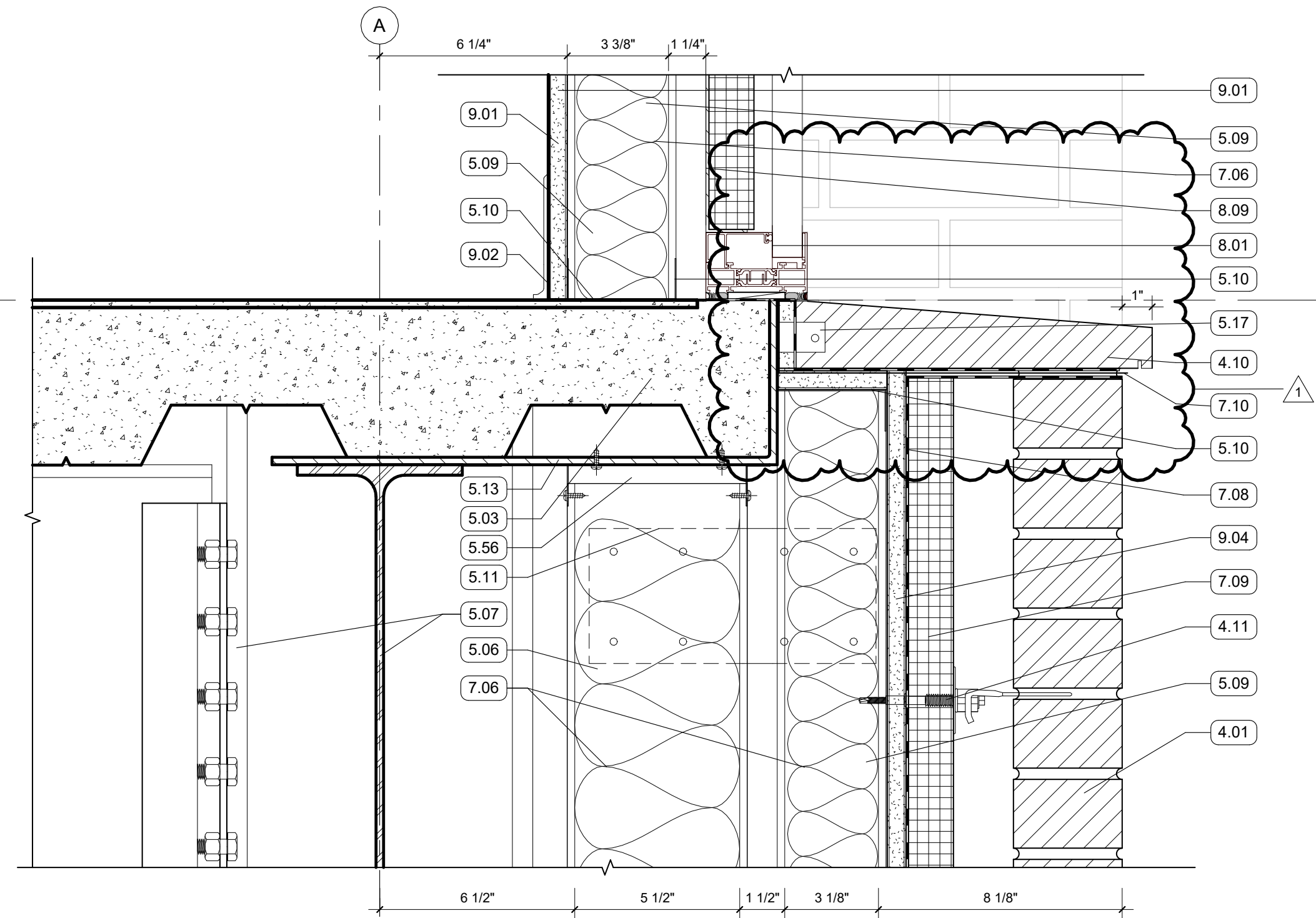
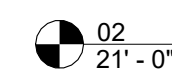
SECTION DETAIL - METAL SILL
3" = 1'-0" | RE:1/A350



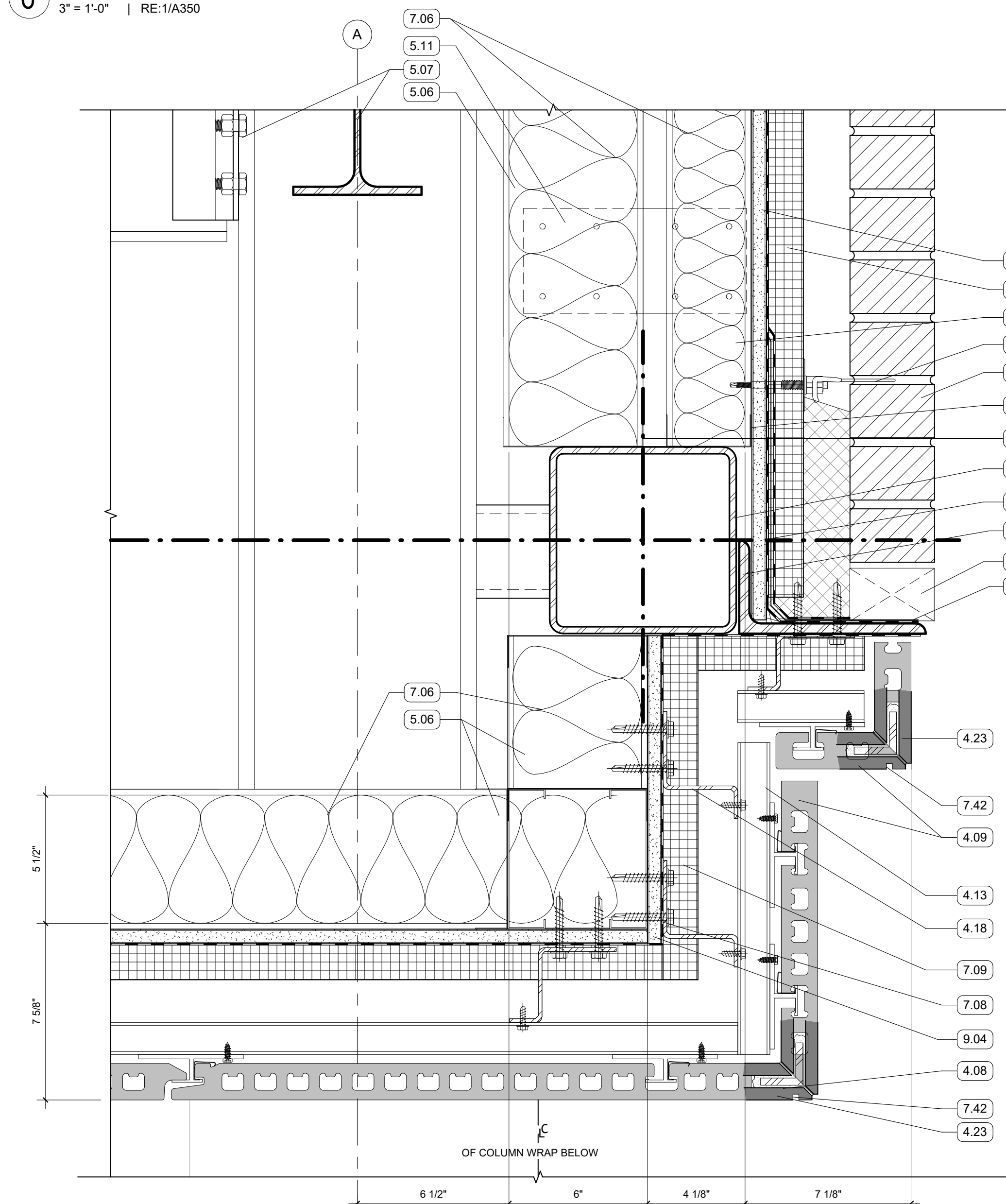
SECTION DETAIL - CAST STONE BASE
3" = 1'-0" | RE:1/A350



SECTION DETAIL
3" = 1'-0" | RE:1/A350



SECTION DETAIL
3" = 1'-0" | RE:1/A350



SECTION DETAIL - 2ND FLOOR TO SOFFIT
3" = 1'-0" | RE:1/A350

GENERAL NOTES

KEYNOTES

- 2.02 CONCRETE SIDEWALK
- 2.04 GRANULAR FILL
- 2.05 COMPACTED FILL
- 2.06 PREFORMED EXPANSION FILLER & SEALANT
- 3.01 CONCRETE SLAB AND REINFORCEMENT
- 3.02 STRUCTURAL GRADE BEAM
- 4.01 FACE BRICK VENEER, RUNNING BOND
- 4.04 TERRA COTTA RAINSCREEN - STACK BOND, UNIT SIZE #1
- 4.07 TERRA COTTA RAINSCREEN, BASE CLOSURE ASSEMBLY
- 4.08 PLASTER SOFFIT SYSTEM ON MTL. FRAMING - ALTERNATE NO. 2 REPLACES PLASTER SYSTEM WITH TERRA COTTA LARGE FORMAT SOFFIT PANELS
- 4.09 TERRA COTTA SPECIAL SHAPE END ENCLOSURE
- 4.10 FACE BRICK, SPECIAL SHAPE SILL
- 4.11 MASONRY ANCHORS
- 4.12 WEEP VENTS AT 24" O.C. MIN
- 4.13 NON-CONTINUOUS ALUMINUM SUBSTRUCTURE
- 4.18 CONTINUOUS ALUMINUM SUBSTRUCTURE
- 4.20 CAST STONE PANEL
- 4.22 MORTAR NET
- 4.23 BONDED CORNER
- 5.01 8" METAL STUD FRAMING
- 5.02 8" METAL STUD TRACK
- 5.03 5 1/2" COMPOSITE MTL. DECK AND CONCRETE SLAB
- 5.05 6" METAL TRACK
- 5.06 6" METAL STUD FRAMING
- 5.07 STRUCTURAL STEEL FRAMING
- 5.09 3 5/8" METAL STUD FRAMING
- 5.10 3 5/8" METAL TRACK
- 5.11 BRIDGE STUD AS REQ'D
- 5.13 EDGE ANGLE
- 5.14 STRUCTURAL BRICK SHELF
- 5.17 STL PLATE SUPPORT W/ WELDED DOWELS
- 5.56 DEFLECTION TRACK
- 6.02 WOOD BLOCKING
- 6.03 SOLID SURFACE WINDOW STOOL WITH CHAMFERED EDGES
- 7.06 BATT INSULATION, SIZED TO MATCH STUD DEPTH
- 7.07 VAPOR RETARDER
- 7.08 PROTECTION COURSE
- 7.09 MINERAL FIBER BOARD INSULATION
- 7.10 THRU-WALL FLASHING, SLOPED TO DRAIN
- 7.11 BACKER ROD AND SEALANT
- 7.25 FORMED ALUMINUM WINDOW HEAD FLASHING
- 7.26 FORMED ALUMINUM SILL
- 7.27 SEALANT
- 7.30 FORMED ALUMINUM TRIM
- 7.42 DRIP EDGE
- 8.01 ALUM. STOREFRONT, CURTAINWALL, OR WINDOW SYSTEM. SEE OPENING SCHEDULE
- 8.09 BACK PANEL
- 9.01 5/8" GYPSUM BOARD; SEE FINISH PLAN FOR FINISH MATERIAL
- 9.02 WALL BASE, SEE FINISH PLAN FOR FINISH MATERIAL
- 9.03 FLOORING, SEE FINISH PLAN FOR FINISH MATERIAL
- 9.04 5/8" EXTERIOR SHEATHING
- 9.08 GYP BD CEILING ON METAL FRAMING
- 26.01 RECESSED LED FIXTURE